

## Base Metal Woven

Producttype	Kamerbreed
Collectie	Noble Materials
Stijlnummer	5A219
Aspect	Geweven Patroon Cut / Loop
Vezel	Ecosolution Q® Nylon
Verfmethode	100% In Oplossing Geverfd
Primaire Backing	Synthetisch
Beschermende Behandelingen	SSP® Shaw Grondbescherming

	u.s.	metric
Productformaat	12 ft	3.66 m
Row	7	27.56 per 10 cm
Pitch	216	850.39 per 10 cm
Gemiddelde Dichtheid	7558 per cu.yd.	0.28 g/cm³
Totale Dikte	0.315 inches	8 mm
Woven Pile Weight	38 oz/yd²	1288.4 g/m²
Installatiepatroon Herhalen	.375 in	.95 cm



### Aanbevolen Installatiemethode

Direct Glue, Stretch-In

### Gegevens + Testen

Pooltest	Pass
Stralingspaneel (Astm E648)	Class I
Nbs-rook	Less Than 450
Elektrostatische Weerstand	Less Than 3.5 kv
Cri Groen Label Plus (Glp)	GLP6982
Ada Compliance	>0.6, Voldoet aan de aanbevolen statische wrijvingscoëfficiënt voor ADA-loopvlakken en toegankelijke routes***

Test Reports may be included or listed by the manufacturing/inventory style number as opposed to the noted selling style number.

### Garanties

10 Jaar Commercieel Beperkt

### Kenmerken + Certificeringen

CRI Green Label Plus (GLP)	GLP6982
milieugarantie	Re[turn] Reclamation Program*   Pickup & Delivery Available
totaal gerecycleerde inhoud	<1% (Pre-Consumer <1%   Post-Consumer 0%)
productverpakking	100% Recycleerbaar
land van herkomst	Verenigde Staten

### Coördinerende Producten

Carpet Tile: **Slab Tile, Honed Tile, Alchemy Tile, Form Tile**

Broadloom: **Monolith Woven, Strata, Fault**

### Groen Leed Bijdragekrediet

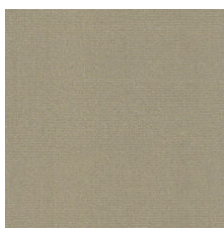
"MR-krediet: openbaarmaking en optimalisering van bouwproducten  
Milieuproductverklaringen - Optie 1: Milieuproductverklaring (EPD)"

0

### Available Colorways



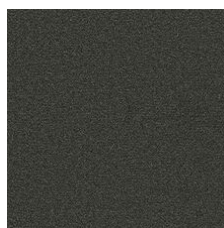
Cararra Silver 18100



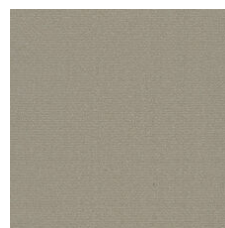
Alabaster Gold 18111



Colossal Bismut 18496



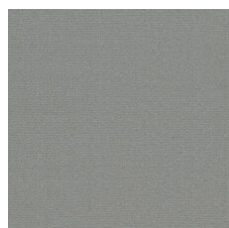
Onyx Silver 18505



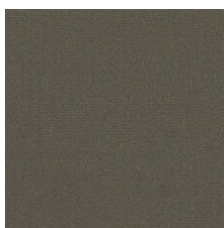
Element Platinu 18506



Forge Platinum 18518



Talc Platinum 18535



Cornerstone Cop 18555



Slate Palladium 18595

### Aanvullende Informatie

\* To learn more about the recyclability of our products and our Environmental Guarantee, please visit [shawcontract.com/sustainability](https://shawcontract.com/sustainability).

\*\*Meets or exceeds all local and national regulations in country of manufacture. (Manufactured in an ISO 9001 & ISO 14001 certified facility or equivalent)

\*\*\*This carpet is manufactured to be ADA compliant, but to be fully ADA compliant, the end-user must ensure the carpet is adhered to the floor and installed as outlined in the ADA standards.

[Installation Guidelines](#)

[Maintenance Guidelines](#)

Specifications are subject to nominal manufacturing variance. Material supply and/or manufacturing processes may necessitate changes without notice.

This product is an exclusive design and may not be duplicated in any manner. Use of this design in the creation of another product design is also strictly prohibited.

Visit [shawcontract.com/testing](https://shawcontract.com/testing) for more information.



## PVC-Free

Corporate Headquarters +1 800 257 7429 | +1 706 532 7984 | Atlanta +1 404 853 7429 | Bengaluru +91 80 6773 0202 | Beijing +86 10 6568 588 | Chicago +1 312 467 1331 | Dubai +971 4 584 6956 | Hong Kong +852 2623 0371 | Latin America (Miami) +1 305 827 5912 | London +44 207 961 4120 | Los Angeles +1 800 233 1614 | Melbourne +61 3 9939 8543 | Mexico City +55 5010 7600 | Mumbai +91 22 6284 5050 | Nantong +86 400 800 7429 | New York +1 212 953 7429 | Paris +33 (0) 1 81 22 44 39 | San Francisco +1 415 955 1920 | Santiago +562 2431 5000 x 550 | São Paulo +55 11 3071 1702 | Shanghai +86 21 3338 4000 | Singapore +65 6733 1811 | Sydney +1 800 556 302

© 2024 Shaw Industries Group, Inc., a Berkshire Hathaway Company  
May 16, 2024

2 of 2